



# Dell EMC PowerVault Storage

Simple. Fast. Affordable.

**DELL**Technologies

# Agenda

1 PowerVault ME4 Series Overview

2 Solutions Overview

3 Management Ecosystem

4 PowerVault MD/ME JBOD Overview

5 PowerVault NX Series Overview

6 Service and Support



**SIMPLE. FAST. AFFORDABLE.**

# Dell EMC entry & midrange storage around the globe

- **92% of the Fortune Global 100 Companies** use Dell EMC Entry/Midrange Storage
- Top **10 Largest Energy Companies** in the World use Dell EMC Entry/Midrange Storage
- Top **10 Largest Banks in the World** use Dell EMC Entry/Midrange Storage



PowerVault ME4 Series



PowerStore Series



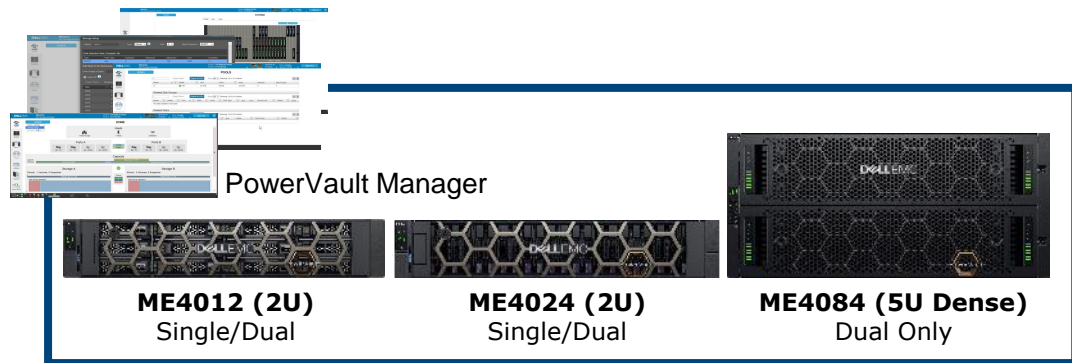
SC Series



Unity XT Series

# Dell EMC PowerVault ME4 Series

Purpose-built storage for SAN & DAS



## SIMPLE.

- Web-based (HTML5) management
- Installs and configures in 15 minutes
- Extended management ecosystem


## FAST.

- Bandwidth: 5.5GB/s Write & 7GB/s Read
- Performance: up to 320K<sup>1</sup> IOPs
- Scale: 12G SAS backend

## AFFORDABLE.

- Low-cost starting configurations
- Easy to own with all-inclusive software
- Modular pay as you grow model

**4PB**

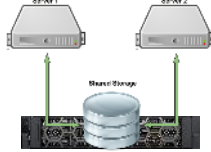


**5-9's**  
99.999%

**HIGH AVAILABILITY & HIGH CAPACITY**



**SERVER-ATTACH READY**



**SAN STORAGE-READY**

<sup>1</sup> AD# G18000167 Based on Seagate Technology's LX-3 Performance Characterization report, 2018 (Virtual Test Results)

# Why PowerVault ME4 Series?

ME4 delivers significant improvements and benefits over MD3<sup>1</sup>

**122%**

More raw capacity

**75%**

More system drives

**40%**

Better density



**SIMPLE. FAST. AFFORDABLE.**

**4X**

Increased performance

**2.6x**

Faster bandwidth writes

**HTML5**

Management GUI

<sup>1</sup> MD3 primary storage arrays have gone End Of Sales Life

# PowerVault ME4 Storage

Entry level performance, scale and simplicity

RBOD Models with RAID Controllers:



EBOD Expansion Enclosures



Configurations:

	2U12 drives	2U24 drives	5U84 drives	
<b>Max Raw Capacity<sup>2</sup></b>	3.1PB	3.0PB	4PB	9 x 2U enclosures (behind ME4012/ME4024)
<b>Min/Max Drives</b>	2/264	2/276	28/336	3 x 5U enclosures (behind ME4012/ME4024/ME4084)
<b>Media</b>	Hybrid (0-100% Flash)			
<b>Protocols</b>	8/16Gb FC, 1/10Gb iSCSI, 12Gb SAS		12Gb SAS Backend	
<b>Data Protection</b>	Virtual Copy, Snapshots, Async Replication, SEDs			
<b>Performance</b>	Tiering, SSD Read Cache			
<b>Integration</b>	VMware Vcenter Plugin, SRM Plugin			
<b>Management</b>	PowerVault Manager			
<b>Architecture</b>	Thin provisioning, ADAPT, Internal Key Manager (encryption)			

<sup>1</sup> ME Expansion Units (DAE) cannot be connected to a server directly (not a server-attached JBOD)

<sup>2</sup> Three ME484 enclosures as expansion; PB maximum per array determined by use of Virtual or Linear mode

# Connecting up PowerVault ME4 Storage

Flexible expansion options for PowerEdge Servers

## Direct-Attach

Low Latency



PowerEdge Server

SAS



MD1400 / MD1420 JBOD



PowerVault ME484 JBOD

## Shared Storage

Performance



PowerEdge Server

FC/iSCSI SAN



PowerVault ME4 RBOD\*



PowerVault ME4 EBOD\*

## Shared Storage

Density



PowerEdge Server

SAS



PowerVault ME4 RBOD\*



PowerVault ME4 EBOD\*

2 x Server Brick 1



Single Namespace

2 x Server Brick 2



Single Namespace

# PowerVault ME4 Storage all-inclusive software

No costly licensing makes PowerVault easier to own, deploy and use

<b>ADAPT</b> Functionality enabling affordable capacity expansion & faster drive rebuild times.	<b>Thin Provisioning</b> Allocate and consume physical storage capacity as needed in disk pools	<b>SSD Read Cache</b> Increase execution speed of applications by caching previously read data	
<b>IP Remote Replication</b> Replicate data to any global location that includes mirroring thin provisioned pools	<b>FC Remote Replication</b> Replicate data to any global location that includes mirroring thin provisioned pools	<b>Snapshots</b> Recover files after accidental delete/alteration with point-in-time copies	<b>Auto-Tiering</b> Improve performance and efficiency with less hardware expense
<b>Volume Copy</b> Seamlessly clone volumes for re-purposing on different spindles and drives	<b>SED Drive Encryption</b> Render data useless to unauthorized users with drive-level encryption even if the drive has been removed from the enclosure		<b>vCenter/SRM; SMI-S with SCVMM</b> vCenter & SRM integration to move live VMs at scale between sites; Easily automate storage management running Hyper-V VMs
<b>PowerVault Manager</b> Native HTML5 management interface for configuring, provisioning, managing, monitoring and supporting a single PowerVault ME4 array		<b>CloudIQ</b> Cloud-native monitoring application that uses ML/AI and predictive analytics from telemetry gathered across thousands of systems to provide system health scores	
<b>Management Ecosystem</b> Integrate with Nagios Core/XI for auto-discovery, inventory and monitoring and provide increased scalability for unified datacenter management with OpenManage Enterprise integration		<b>SupportAssist</b> An embedded protocol connected to Dell EMC to help you proactively maintain the health of your PowerVault ME4 storage array or other Dell EMC device.	



# FUTURE-PROOF

## STORAGE LOYALTY PROGRAM

### INVESTMENT PROTECTION



*Lowering the risk of your investment*

### A PATH FORWARD



*You will be ready for the future*

### PEACE OF MIND



*No hidden costs or fees*

# Solutions Overview

**DELL**Technologies

# PowerVault ME4 Series solution stack flexibility

At-a-glance access to affordable technology options with radical simplicity

<b>SOLUTION</b>	HPC Parallel File Systems	Surveillance	Virtualization, VDI & Backup
<b>BENEFIT</b>	Throughput, Performance, Capacity Expansion	Archive; High Capacity/Density	Simple, Affordable, Fast, Flexible
<b>VIRTUALIZATION</b>	VMware vSphere; VMware Horizon View; Microsoft Hyper-V; Citrix XenServer		
<b>MANAGEMENT</b>	PowerVault Manager; CloudIQ; VMware SRM; OME; Nagios Core & XI		
<b>INTEGRATIONS</b>	SupportAssist; vSphere Plug-in; SRA Adapter; SM-S integration with SCVMM		
<b>PROTECTION</b>	Snapshots; Replication; ADAPT; SED Drives		
<b>INFRASTRUCTURE</b>	PowerVault; PowerEdge; Networks; Monitoring Systems		

# PowerVault ME4 Series for HPC

Modular building blocks for scale-out storage with predictable performance/low latency

## Scale Throughput:

to 21.3GB/s Writes  
to 22.5GB/s Reads  
(sequential)

## Scale Capacity:

from  
100's TBs  
to 100's PBs

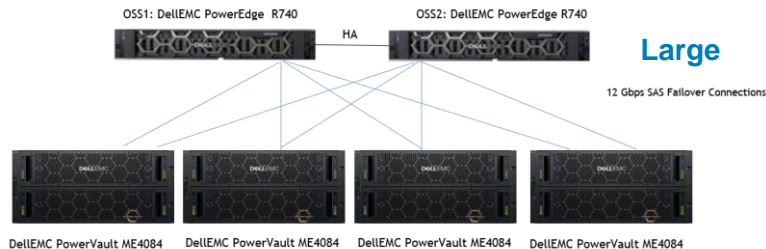
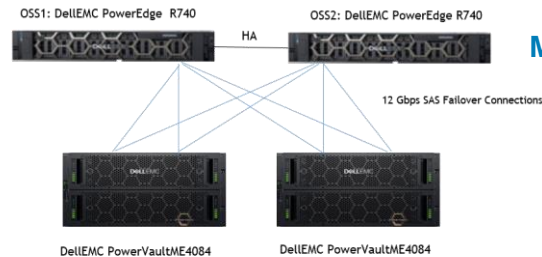
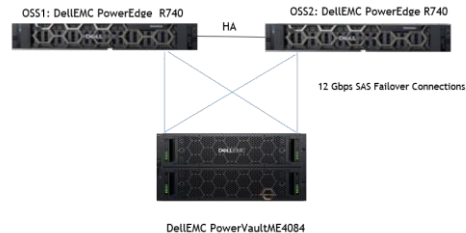
## Scale Performance:

to 28.5K Write IOPS  
to 34.06K Read IOPS

**Ideal solution for BeeGFS, PixStor, more**

PixStor: <https://www.dell.com/support/article/en-us/sln318841/dell-emc-ready-solution-for-hpc-pixstor-storage?lang=en>

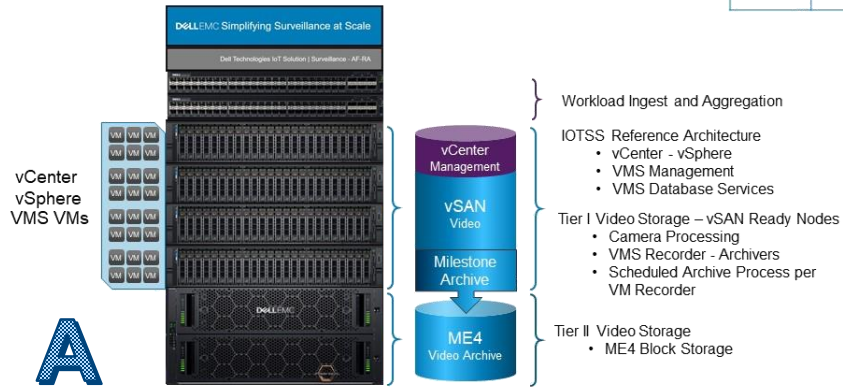
BeeGFS: <https://www.dell.com/support/article/us/en/19/sln319381/dell-emc-ready-solutions-for-hpc-beegfs-storage?lang=en>



# PowerVault ME4 Series for Surveillance

Flexible video archive and capacity storage implementations

## IOTSS Reference Architecture – Safety and Security

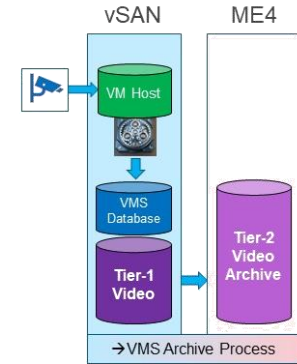


T1	T2
VSAN	ME4

## ME4 as T2 Capacity Storage



VMS-DB	T1	T2
vSAN	vSAN	ME4
		VMS Archive



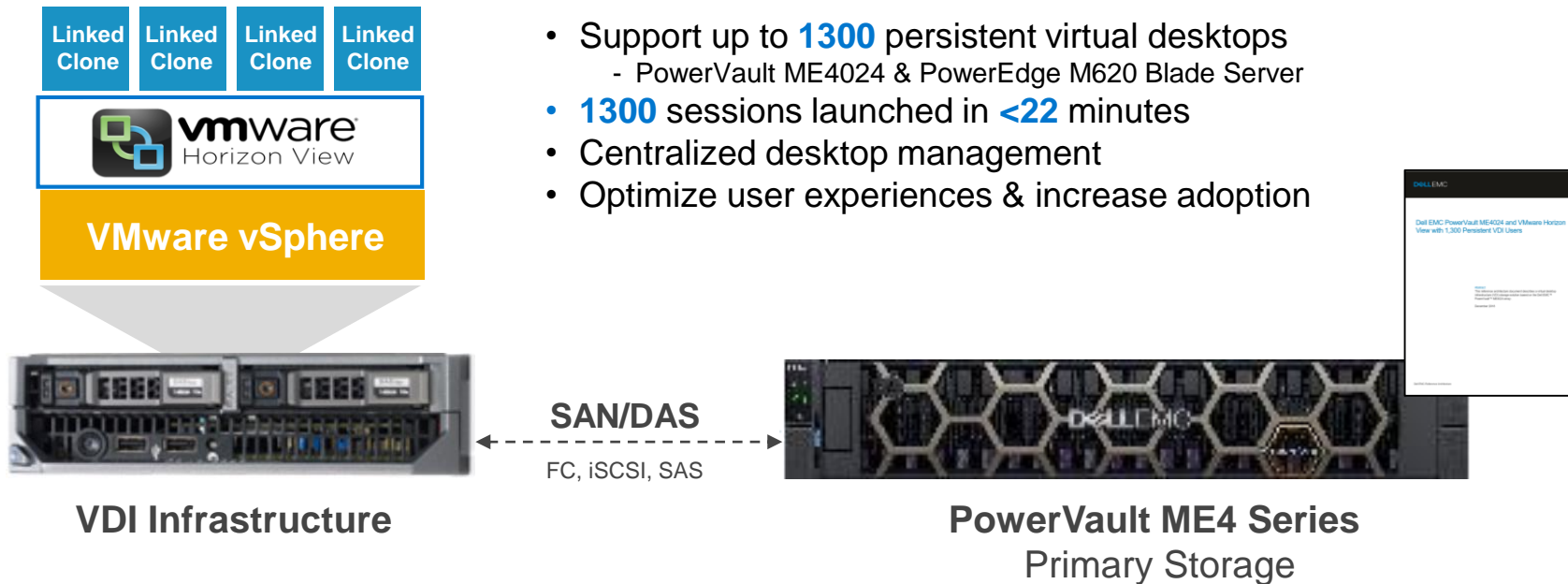
Dell Technologies



Support up to 600 cameras @ 4 Mb/s

# PowerVault ME4 Series for Virtual Desktops

Optimized virtual desktop experience for SMBs

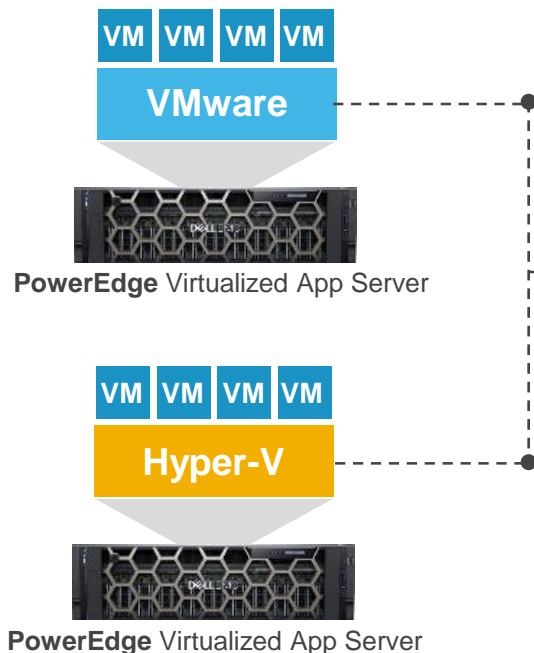


- Support up to **1300** persistent virtual desktops
  - PowerVault ME4024 & PowerEdge M620 Blade Server
- **1300** sessions launched in **<22** minutes
- Centralized desktop management
- Optimize user experiences & increase adoption

White paper: [https://downloads.dell.com/manuals/common/powervault-me4024-vmware-horizon-reference-architecture-1300-users-3919-ra-vdi\\_en-us.pdf](https://downloads.dell.com/manuals/common/powervault-me4024-vmware-horizon-reference-architecture-1300-users-3919-ra-vdi_en-us.pdf)

# PowerVault ME4 Series for Virtualization

Affordable virtualization for SMBs



- Support for **100's of VMs<sup>1</sup>**
- vSphere and Hyper-V hypervisors
- Integrates with SMI-S / MS SCVMM & SRA
- Supports PowerEdge Servers



PowerVault ME4 Production Storage

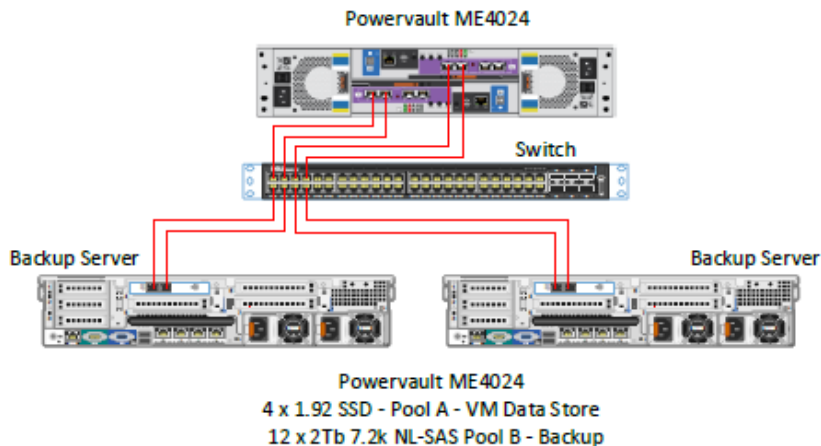
[VMware Compatibility Guide](#)

<sup>1</sup> Variables such as volumes, RAID, configuration, cores, server, etc. will ultimately determine the actual value

# PowerVault ME4 Series for Backup/Recovery

Simplified block-based data protection for SMBs

## Switched Topology



- ME4 is certified with Veeam Ready Program
- Can be used as DAS or NAS
- Backup your data easily and keep it safe
- Visit: <https://www.veeam.com/kb3113>

## DAS Configuration



**Note:** NL SAS drive backup performance exceeded the Veeam requirements



# PowerVault ME4 is OEM ready

Where your brand and our IP come together

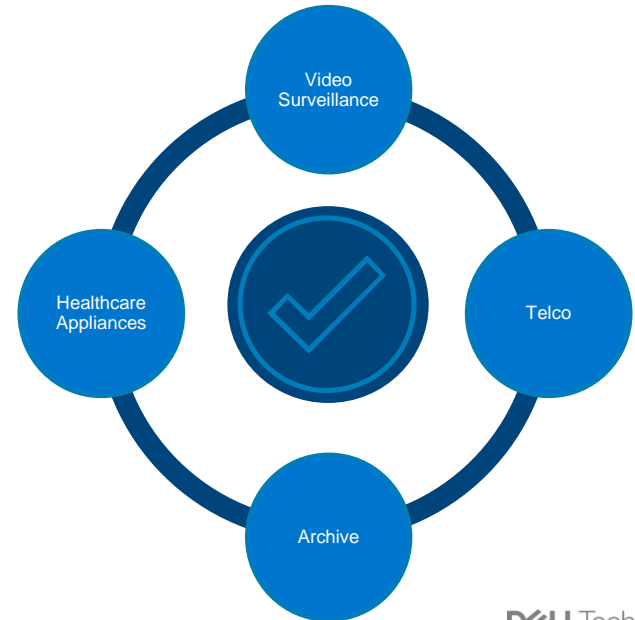
## Un-badged storage waiting for your logo

Place your logo on PowerEdge ME4 un-badged products in the factory

Minimize administration overhead

Dell EMC provides technical training documents, packaging and labels

## Established in 4 Workloads

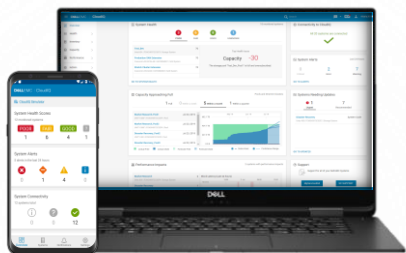


# Management Ecosystem

**DELL**Technologies

# CloudIQ

Intelligently answering questions about your data center



NEW



## Reduce Risk

Monitor potential vulnerabilities across your data center and virtual infrastructure with proactive health scores



## Spot Trouble

Pinpoint deviations in your environment to focus and expedite trouble-shooting

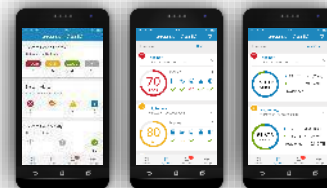


## Plan Ahead

Anticipate business needs with capacity forecasting and anomaly detection

## CLOUD-BASED MONITORING AND PREDICTIVE ANALYTICS FOR YOUR DATA CENTER

CloudIQ



Data Center

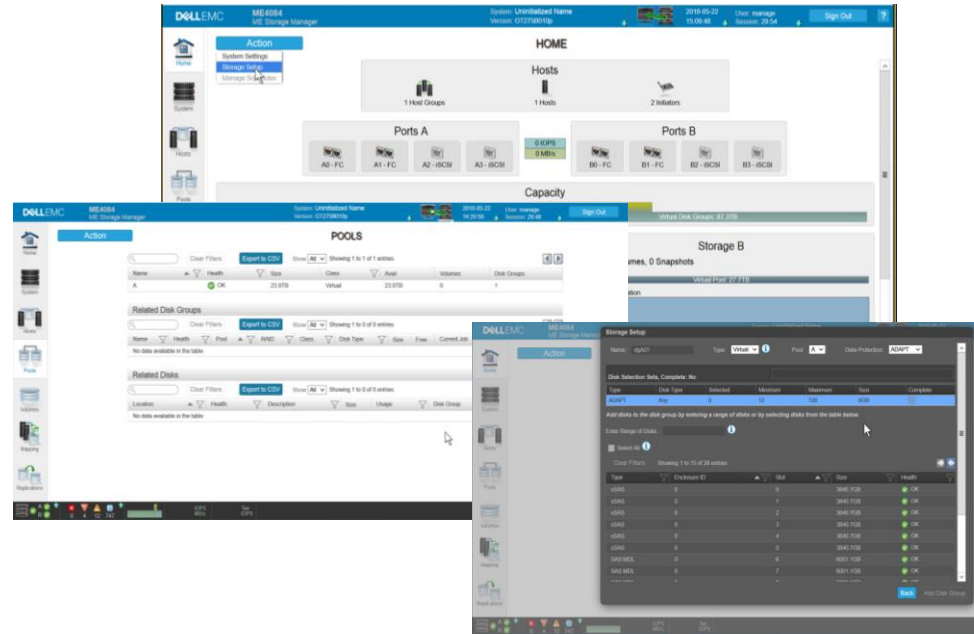
### Available with:

PowerMax  
Isilon  
XtremIO  
Unity XT  
SC Series  
**PowerVault**  
Connectrix  
VxBlock  
VMware

# PowerVault Manager web-based management

Manage ME4 storage simply, intuitively from anywhere

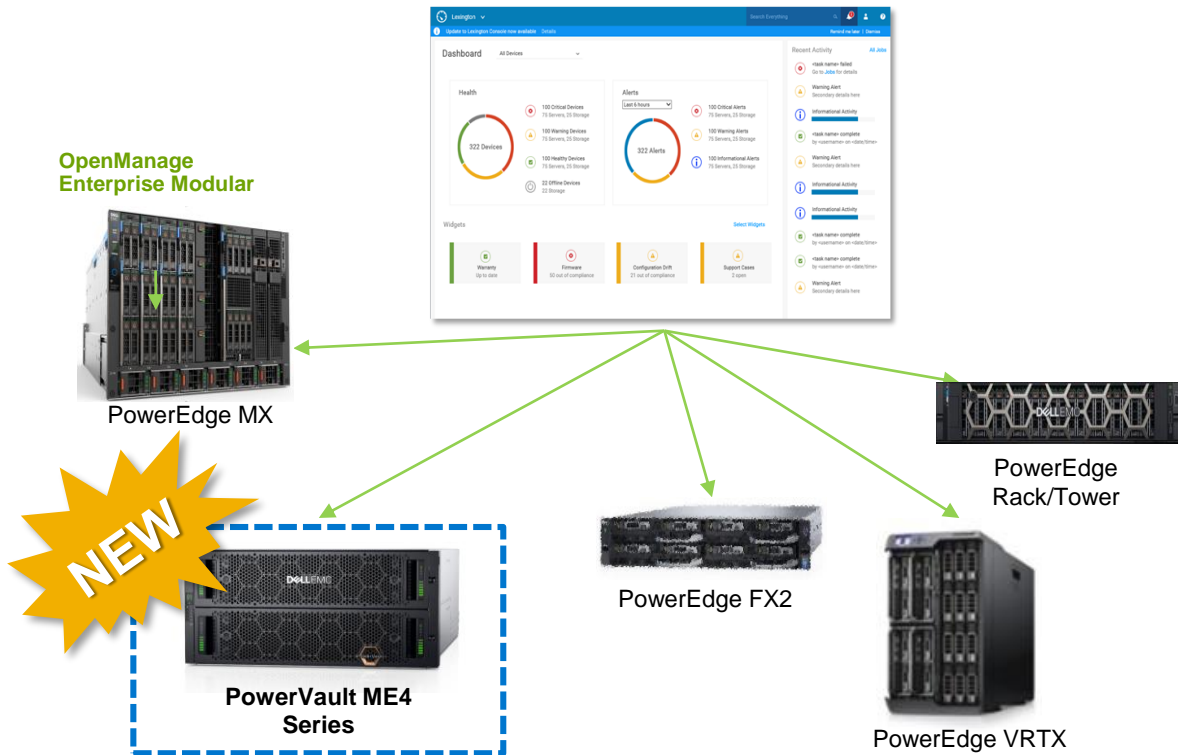
- Single-array HTML5 management interface
- Use common management tasks from convenient locations
- Manage storage profiles, network connections, alerts, more
- Easily connect to SupportAssist and onboard CloudIQ
- CLI support
- Configure in 15 minutes



# PowerVault ME4 Series and OpenManage Enterprise

## Increased scalability for unified data center management

- Monitor ME4 storage and non-Dell EMC hardware for a single-view of the infrastructure
- Scales to manage up to 8,000 server, storage and network devices
- One console can support devices spread across the globe



# Monitor Dell EMC storage arrays with Nagios Core/XI

OPEN

## Nagios 3.1 storage features include:

- Auto-discovery, inventory and monitoring
- Overall storage array health and component-level health monitoring
- SNMP Trap monitoring support
- H/W warranty monitoring
- Launch 1:1 element management consoles directly from Nagios-Core and XI

NEW



PowerVault ME4 Series

Dell EMC storage arrays already supported



SC-Series



PS-Series



PowerVault MD 34/38-Series

# PowerVault ME4 Series and Nagios Core and XI

Monitor Dell EMC storage, server, network and HCI infrastructure

Auto-creation of Host Groups for all supported storage devices including ME4

The screenshot displays the Nagios web interface. On the left, a sidebar menu includes sections for General (Home, Documentation), Current Status (Nagios Overview, Map, Services, Host Groups, Summary, Config, Service Groups), Problems (Alerts, Hosts, Network Changes, Data Search), and Reports (Availability, Trends, Alerts, Hosts, Summary, Configuration Support, Audit/Reports, Event Log). The main content area is titled 'Service Overview For All Host Groups' and is divided into several panels: 'Dell EMC Agent-Free Servers (Dell EMC Agent-Free Servers)', 'Dell EMC Chassis (Dell EMC Chassis)', 'Dell EMC Networking (Dell EMC Networking)', 'Dell EMC Storage (Dell EMC Storage)', 'Dell EMC VxRail (Dell EMC VxRail)', and 'Unix Servers (Non-servers)'. Each panel contains a table with columns for Host, Status, Services, and Actions. The status of each host and service is indicated by colored icons (green for OK, yellow for WARNING, red for CRITICAL).

**1 Configure** various parameters for device discovery such as Target IPs, communication protocol, etc.

**2 Select Discovered Devices** and the associated services that you would like to monitor

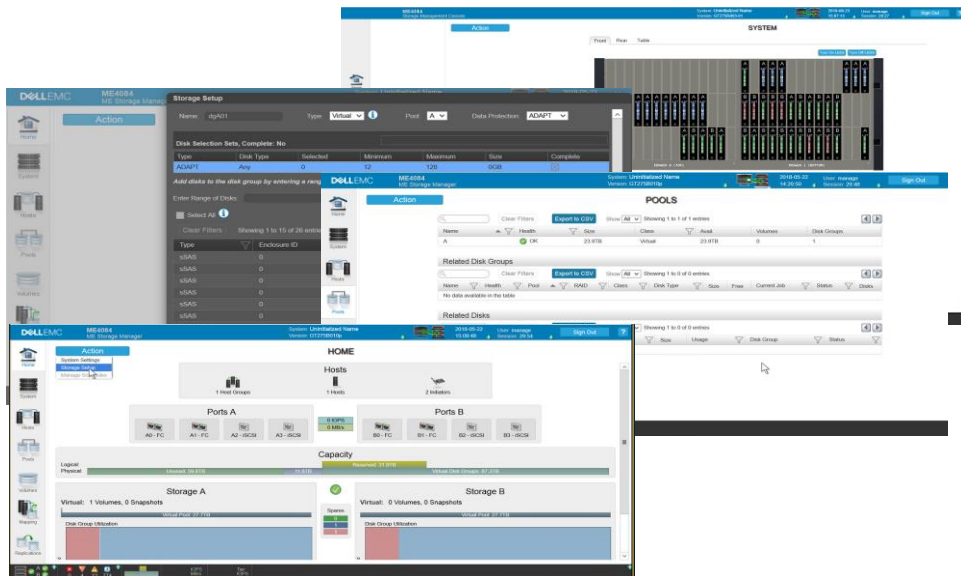
**3 View Configuration Summary**, customize if required and finish configuration

# PowerVault ME4 Demo

**DELL**Technologies



# PowerVault ME4 Demonstration



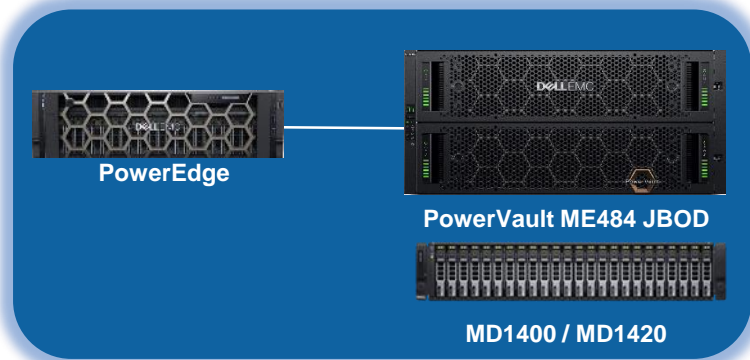
# PowerVault MD/ME JBODs

**DELL**Technologies

# Attach compute power to data power

Flexible capacity expansion options for your PowerEdge Servers

## Include PowerVault MD/ME JBODs with Dell PowerEdge Servers



- Simplifies challenges of server capacity expansion
- Business applications get high-speed access to data
- Support for PowerEdge Servers 13G and 14G
  - Up to 4PB raw capacity for servers
  - 12Gb SAS
- Support for NX NAS servers with Microsoft Storage File/Print Server

# PowerVault MD1400/MD1420 direct-attach storage

## Versatile density and performance

### Cost effective storage solution

- Low-cost storage expansion (cost/TB)
- Simple and cost-effective capacity for PowerEdge servers
- Ideal for backup or disaster recovery solutions

### Designed for density and performance

- Mix and match drives: NL SAS, SAS, and SSD, SED
- OS support for various applications
- Enclosures to meet your capacity and performance requirements

### Simple design drives efficiencies

- Hot-swappable EMMs, drives, fans and power supplies
- Seamless data management with the PowerEdge server
- End-to-end 12Gb connectivity improves performance

## Benefits

- Dramatically expand storage behind PowerEdge servers at an affordable price
- Choose the form-factor, drive size and OS support needed to optimize performance and operational objectives
- Data is secure and can be managed seamlessly through the PowerEdge host server

## Ideal for

- I/O Performance-Intensive Applications (large databases, web serving, email) or sequential applications for video streaming
- Ideal for backup or data recovery solutions



# PowerVault ME484 dense server-attach

Dell's best drive density per rack unit – extreme density

## Designed for PowerEdge server expansion

### Dell EMC enterprise hard drives

- Ensures added capacity is affordable

### Mix and match drive capacity

- Tailor performance to meet the needs of a variety of applications
- 40% more capacity than the previous dense enclosure

### Data remains close to the compute power of the PowerEdge server

- Keeps performance at its peak

## Benefits

- Ultra-dense storage for Dell EMC's award-winning PowerEdge server products — over 4 Petabytes of capacity
- Maintain compute power and performance, while adding storage capacity

## Ideal for

- Video surveillance
- High performance and high capacity requirements
- Software-Defined-Storage



# PowerVault server-attach expansion enclosures

PowerVault JBOD Models:

**MD1400**



**MD1420**



**ME484**



Value:

High-density

Performance-optimized

Performance & density-optimized

<b>Max Raw Capacity</b>	1.15PB	460.8TB	4PB
<b>Max Drives</b>	2/96	2/192	28/336
<b>Max Enclosures</b>	8	8	4
<b>Configuration</b>	2U12	2U24	5U84
<b>Drives</b>	SSD, SAS, NLSAS, SED		
<b>Drive Bays</b>	12x3.5"	24x2.5"	84x3.5" & 2.5"
<b>Host Interface</b>	12Gb SAS	12Gb SAS	12Gb SAS
<b>Management</b>	OpenManage		PowerTools Server Hardware Manger



All three JBOD models support 13G and 14G Dell PowerEdge Servers

# PowerVault NX Series

**DELL**Technologies

# Dell EMC and Microsoft: a powerful, affordable solution

**Dell EMC NX  
Windows NAS  
series**



**Windows Storage  
Server 2016**



**Easy management**



**Reliable integration**



**Storage scalability**

- Dell's PowerEdge server and storage experience with the latest Windows Storage Server OS
- One contact for software, hardware and infrastructure services



# PowerVault NX Windows NAS Series

## PowerVault NX430

- Turnkey, entry-level NAS
- Windows Storage Server 2016 Standard or Workgroup
- 1U with max capacity up to 40TB



## PowerVault NX3240

- SMB or remote office
- Windows Storage Server 2016 Standard
- 2U with max capacity up to 192TB



## PowerVault NX3340

- Highly available clustered storage
- Windows Storage Server 2016 Standard
- 1U supports up to 64 cluster nodes



- Affordable storage without sacrificing performance or capacity
- Enterprise features and capabilities with Windows Storage Server 2016
- PowerEdge server hardware with built-in energy efficiency

# Service and Support

**DELL**Technologies

# PowerVault with SupportAssist Enterprise & leading system management consoles

## Support Automation

Automate your support experience with predictive, data-driven technology & **resolve issues up to 72%\* faster**

### SupportAssist Enterprise

- ✓ Automated issue detection, case creation, & system state information collection
- ✓ Proactive and predictive alerts
- ✓ On-demand reporting

\* When combined with ProSupport Plus

## Systems Management

Manage up to 15K server, storage or networking devices with management consoles to simplify and automate essential HW management tasks

### OpenManage Enterprise

### OpenManage Enterprise – Modular *(available 9/13/18)*

### OpenManage Essentials

### Microsoft System Center Operations Manager

- ✓ Device discovery & Inventory
- ✓ Device monitoring and management
- ✓ Alert processing
- ✓ Bare-metal server deployment
- ✓ Server configuration maintenance
- ✓ Server firmware updates
- ✓ On-premise reporting

# Data migration

Move data faster, more securely, and with minimal disruptions

## Host-based migrations



MD3, PS,  
SCv2 and  
VNXe  
to ME4



Up to 35TB distributed across up to  
15 Hosts and 15 LUNs per host

## EXPERTISE

- Program Manager, Data Migration Architect and Data Migration Engineer assigned to each project

## DELIVERABLES

- Detailed analysis, reporting, step-by-step procedures, and cutover plans available
- Specialized migration software moves data accurately and securely

## AVAILABILITY

- For unstructured and structured data platforms
- Works with 3<sup>rd</sup> party or Dell EMC storage arrays

# Dell Technologies Services | PowerVault ME4 Series

Ultimate Choice & Flexibility  
for the life of your system



**Dell EMC  
ProDeploy  
Enterprise  
Suite**

**Plan, install &  
configure with  
confidence**

**Dell EMC  
Data  
Migration  
Services**

**Move data  
efficiently with  
minimal disruption**

**Dell EMC  
ProSupport  
Enterprise  
Suite**

**Get ahead of  
problems before  
they happen**

**With data-driven technologies to connect and manage your service experience**

# Summary

# Dell EMC PowerVault ME4 Storage

Simple, fast and affordable entry storage for SAN/DAS



PowerVault ME4012



PowerVault ME4024



PowerVault ME4084

- Built-in simplicity
  - Intuitive HTML5 GUI
  - All-inclusive SW
  - CloudIQ storage analytics
  - Management ecosystem
  - JBOD options for DAS
- DAS and SAN optimized
- Workload diverse
- Exceptional performance, scale
- Built-in data protection features
- Flexible configurations

**DELL**Technologies



# Backup slides

# Ready Solution for BeeGFS with PowerVault ME4 Storage



- The Dell EMC Ready Solution for HPC BeeGFS parallel file storage solution allows efficient scaling both up and down without losing performance or capacity.
- Based on Dell PowerEdge Servers, PowerVault ME4 Storage Arrays
- InfiniBand, OmniPath support, Ethernet
- Whamcloud backed Lustre Support

**Up to ~4PB (raw), 21.3GB/s write, 22.5GB/s read for a single OSS pair**  
**Scale with additional pairs to scale out performance and capacity**

## Benefits

- ① Run larger and more complex applications faster with over a petabyte in sustained capacity.
- ② Start small and scale to tens of thousands of clients and beyond an petabytes in capacity.
- ③ Dell EMC and Whamcloud® have bundled a tested, validated solution that removes guesswork and support challenges, so you can stay focused on your business or research objectives



# Dell EMC Ready Solutions for HPC Pixstor Storage



The Dell EMC Ready Solutions for HPC Pixstor Storage allows efficient scaling both up and down without losing performance or capacity.

- Based on Dell PowerEdge Servers, PowerVault ME4 Storage Arrays
- InfiniBand, Ethernet
- ArcaStream Backed Support

## Benefits

- ① Run larger and more complex applications faster with over a petabyte in sustained capacity.
- ② Start small and scale to tens of thousands of clients and beyond a petabyte in capacity.
- ③ Dell EMC and ArcaStream have bundled a tested, validated solution that removes guesswork and support challenges, so you can stay focused on your business or research objectives



# Dell EMC Ready Solution for HPC NFS Storage



- Storage solutions based on the NFS protocol are time-tested, easy to use and install.
- For clusters running applications with **lower I/O** needs, NFS storage offers reduced costs in a reliable, easy to administer, industry-standard storage solution.
- In clusters with **higher I/O requirements**, NFS is a good option for a secondary storage repository for home directories, application storage, and longer-term storage of application data.

## Benefits

- ① Highly Available NFS Storage System tuned for HPC environments.
- ② The Dell EMC Ready Solution for HPC NFS Storage is tuned to get up to 30% throughput performance improvement compared to non-optimized NFS solutions.
- ③ Meet future needs more easily with the ability to provide up to 1008 PB raw capacity, with 7 GB/s read &  $\approx$ 5 GB/s write performance in a supported single namespace.
- ④ Full XFS support for 768 TB of usable space.



# PowerVault for Video Surveillance

Bandwidth and scalability for archive and retention needs

## Simple, scalable, high-value solutions

- PowerVault ME4 Storage block solution enables direct integration with video management software to match size and scale capacity expansion and retention requirements
- PowerVault ME4 Storage array can provide up to 4PB

## Solution Sizing

- Dell EMC surveillance team is available to help size and configure storage solutions based on choice of video management system (VMS) and physical architecture

## High-density designs

- Ideally suited for increased storage demands of HD and multi-megapixel camera deployments



*Solution with multiple enclosures that can scale as a single SAN up to 4 PB or as a building block contributing to larger-capacity solutions.*